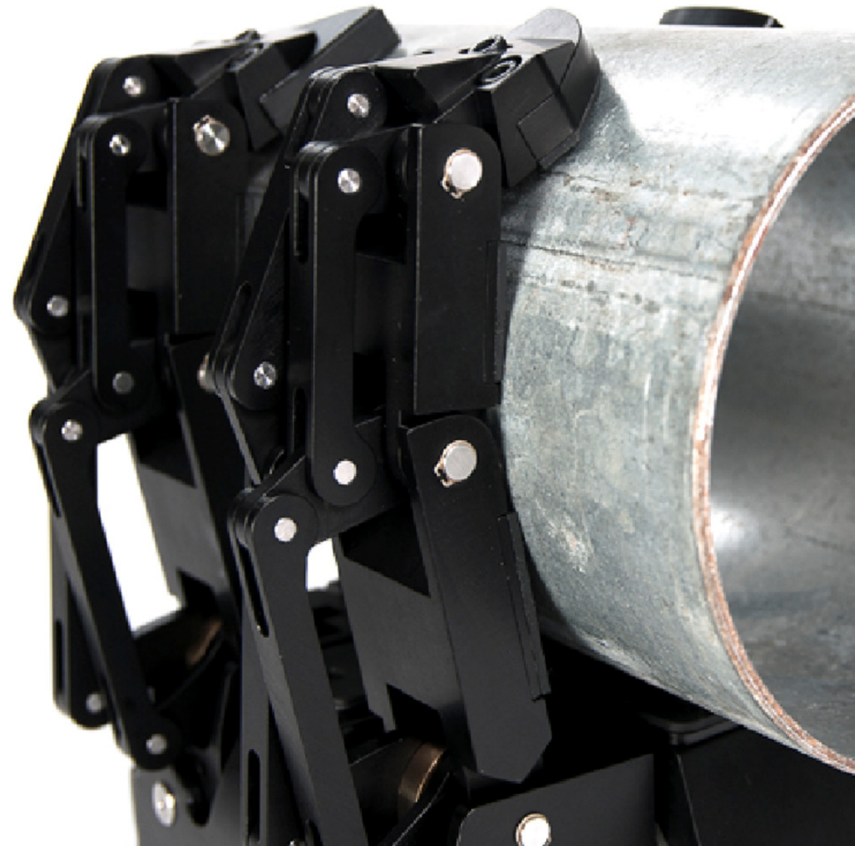




**Increase the Flexibility of
your Welding Process by
Using the Adaptive Gripper**



Who is Robotiq

Industrial dexterous gripper manufacturer

Established strategic alliances with major robot manufacturers and integrators

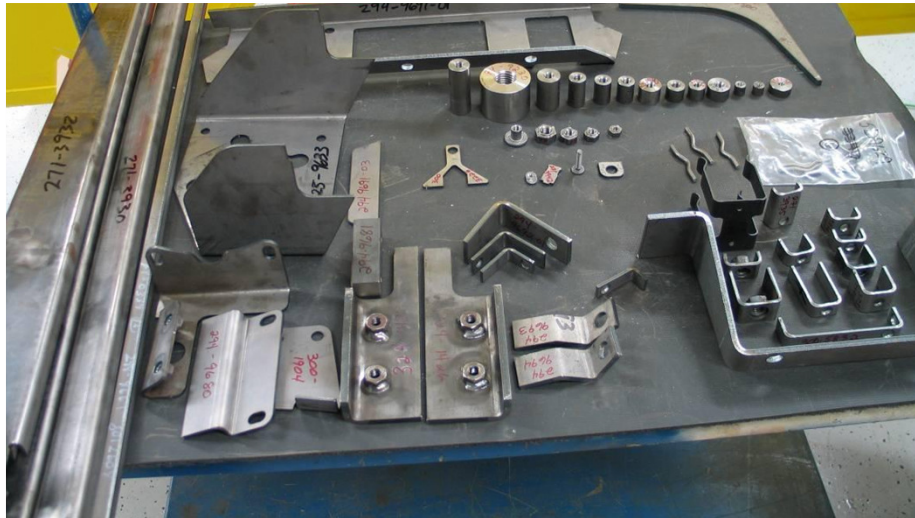
Product launched in March 2011 at the Automate show in Chicago

11-person company founded in 2008

Head office in Quebec City, Canada

Robotic Welding Industry Issues

- High-mix, low-volume batches to automate
- Custom-made fixtures that are expensive and not flexible
- Welders are rare and it can be a challenge to maintain consistency



Need: a flexible solution to reduce production costs, improve process flexibility and consistency

Robotiq Adaptive Gripper

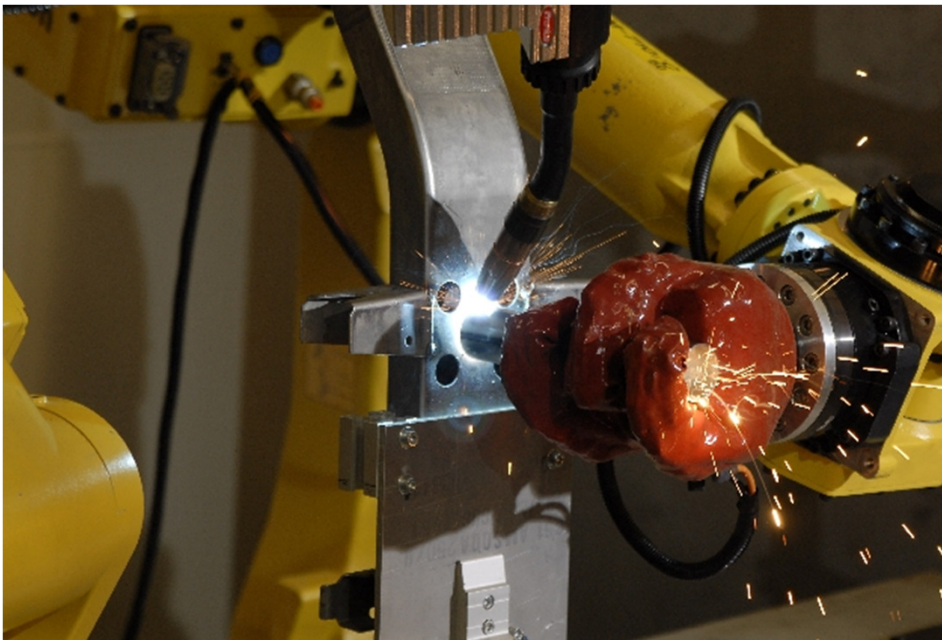
A Key Component for Flexible Robotic Fixturing



- Gripper fully reprogrammable that adapts to various parts and positions
- 4 gripping modes to efficiently pick a wide variety of objects
- A heat and splatter resistant glove to protect the gripper

Make Your Processes More Flexible

Replace Hard Fixtures with Positioner Robots



How Flexible Robotic Fixturing Works

- A vision system locates small parts
- The Adaptive Gripper picks and positions parts on a frame
- Parts are tacked on the assembly
- Welding robot completes the weld

A Key Component for Flexible Robotic Handling:



Adaptive Gripper Key Features

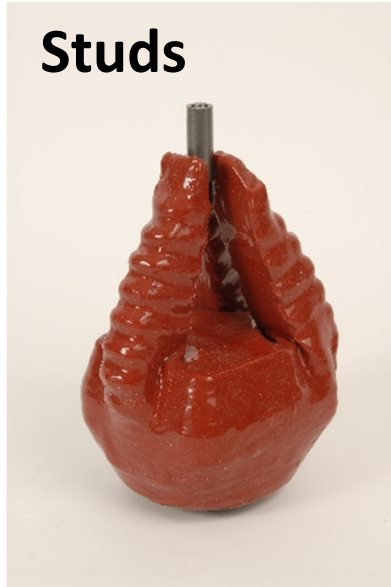
- Simple open/close commands that allow the 3-finger gripper to adapt to any geometry
- Embedded intelligence that simplifies integration with any industrial robot
- Control on closing speed; use partial stroke for short pick-up time
- Grip detection feedback from the gripper
- Embedded gripper controller that communicates with the robot controller over Ethernet/IP, Modbus RTU, DeviceNet or EtherCAT. Program from the teach pendant.
- The gripper, combined with a vision system, provides all the flexibility and precision desired.

Examples of Parts that can be Handled

Brackets



Studs



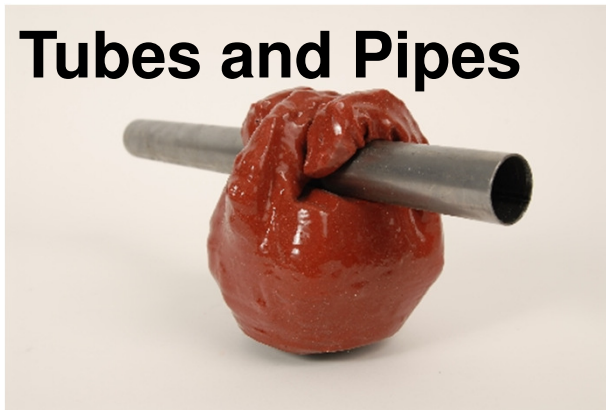
Irregular



Irregular



Tubes and Pipes



What the **Adaptive Gripper** Can Do for You

- ✓ **Reduce fixture costs** and complexity
- ✓ **Reduce operational costs**
- ✓ **Reduce reaction time** and costs for engineering changes
- ✓ **Reduce scrap** due to human handling
- ✓ **Increase production consistency**
- ✓ **Adapt your welding unit** for mixed-model production

Bottom line:

Reduce costs while increasing quality and flexibility



Call us to learn more about the Adaptive Gripper and calculate your ROI potential

Contact Information:

Samuel Bouchard
1-888-762-6847 ext. 5
samuel@robotiq.com

Robotiq

966, chemin Olivier
Suite 325
St-Nicolas, QC
G7A 2N1 Canada